

## Flatgripper NdFeB

## Permanent Magnet

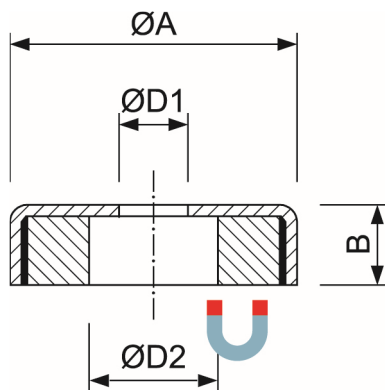
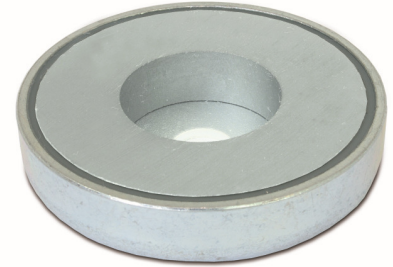
4015 16 ... 75

### Flatgripper with cylinder bore

Flatgripper magnet with a NdFeB magnet in a steel housing. The metallic housing increases the adhesive force of the permanent magnet. The maximum adhesive force of this magnetic system is achieved when it is placed over the entire surface on a metal base.

This series of gripper magnets is designed with a cylinder bore and can be mounted with a screw.

The maximum operating temperature for neodymium magnets is 80°C



#### Benefits at a glance

- inexpensive
- age-free
- Adhesive power is retained indefinitely
- Limitation of spatial effect to the magnetic field
- Rubber sleeves can be used to prevent slipping on a smooth surface
- high bond strength and small size

Special designs or other magnetic materials are possible on request

Part number	Dimensions (mm)				Holding power (N)	Weight (g)	Temperature (°C)
	ØA	B	ØD1	ØD1			
4015 16	16	5	3,5	6,5	75	4	80
4015 20	20	7	4,5	8	105	12	80
4015 25	25	8	5,5	9	160	22	80
4015 32	32	8	5,5	9	310	40	80
4015 42	42	9	6,5	11	520	80	80
4015 48	48	11,5	8,5	15	660	100	80
4015 60	60	15	8,5	15	880	120	80
4015 75	75	15	10,5	18	1100	150	80

Changes, omissions, errors in relation to the products reserved. Similar pictures. All rights belong to the respective rights holders. The adhesive forces have been determined on a ground plate (material St37) with a thickness of 10mm when the magnet is pulled off vertically (1kg approximately 10N). Deviations of up to -10% of the specified values are possible.